

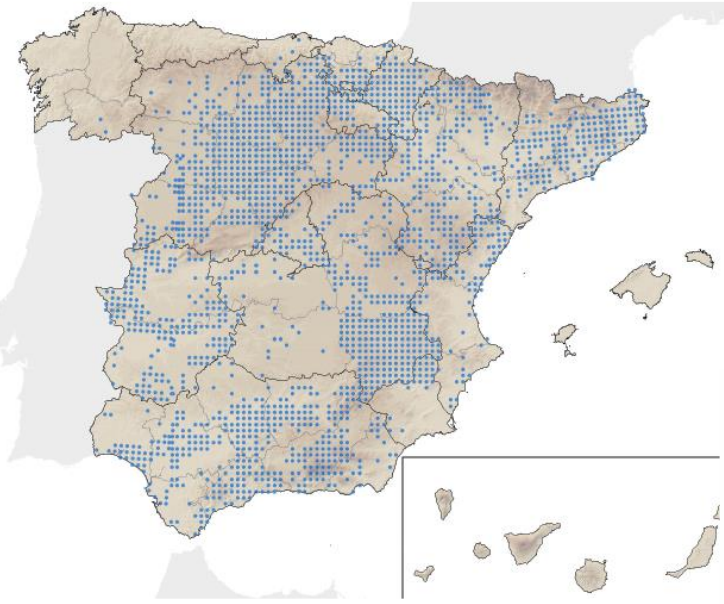
# ALGUNOS MICROMAMÍFEROS EN CASTILLA Y LEÓN

ROEDORES

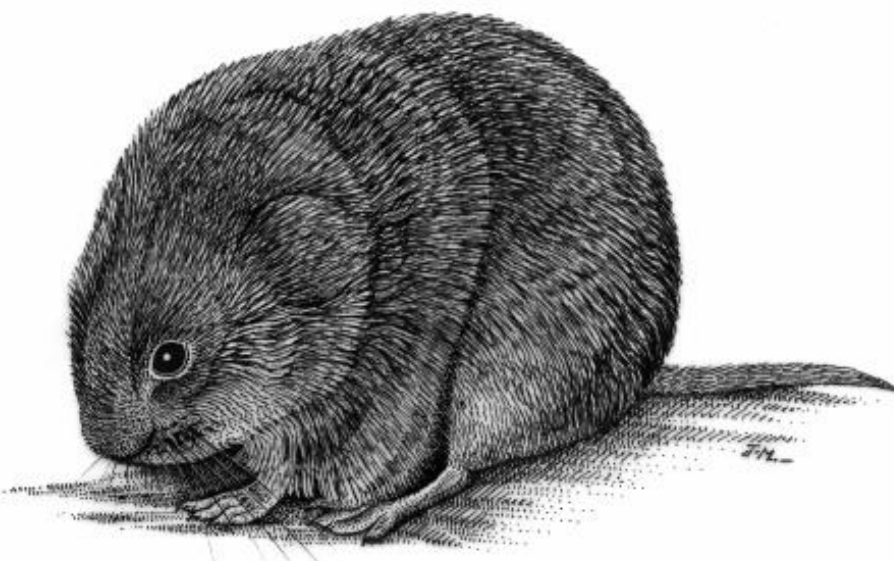
## ARVICOLINOS



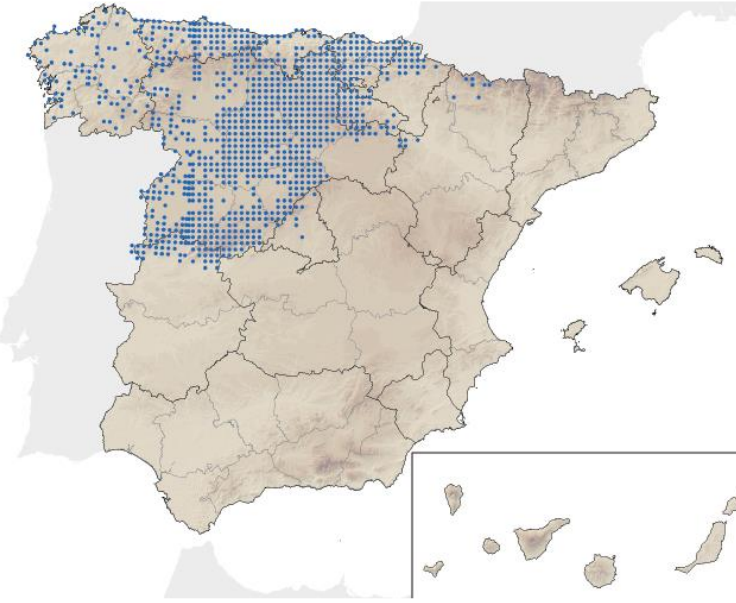
**Topillo mediterráneo**  
*Microtus duodecimcostatus*



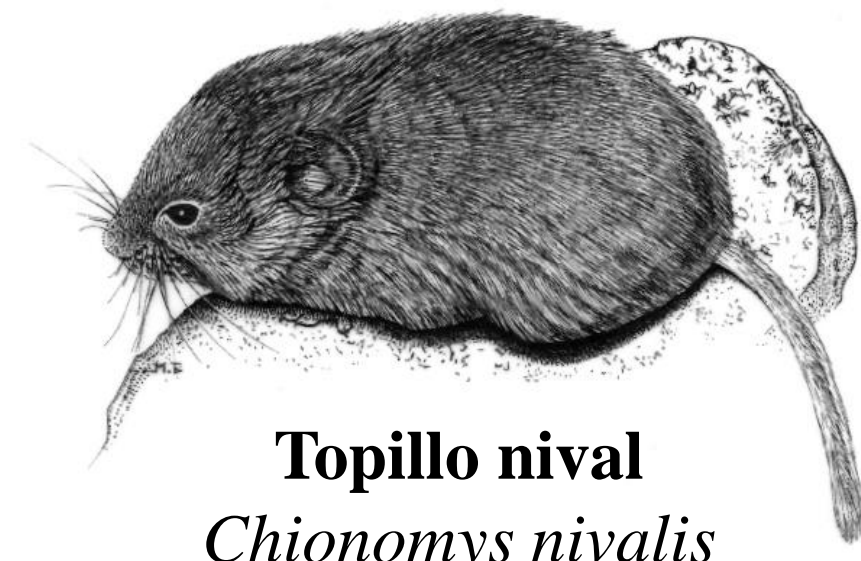
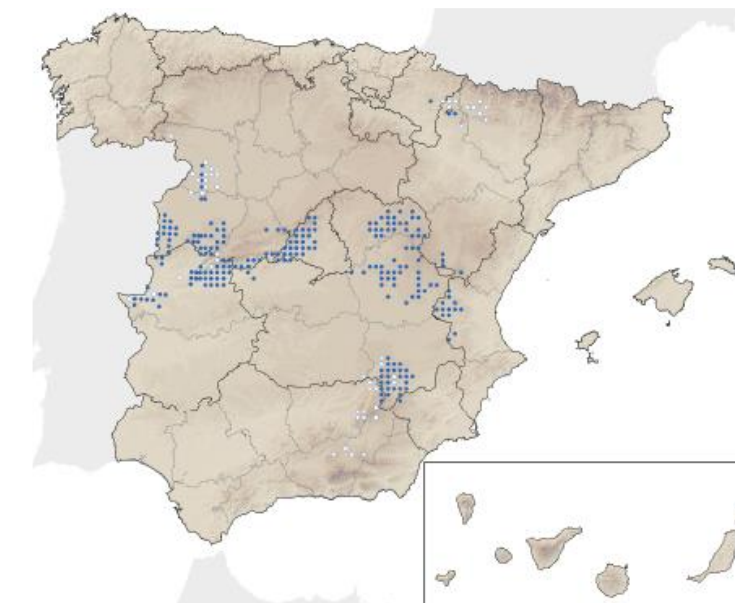
## MICROTUS



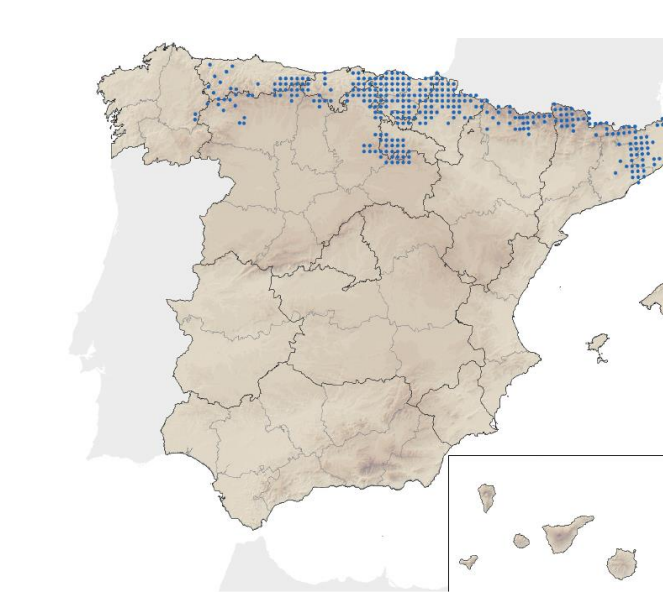
**Topillo lusitano**  
*Microtus lusitanicus*



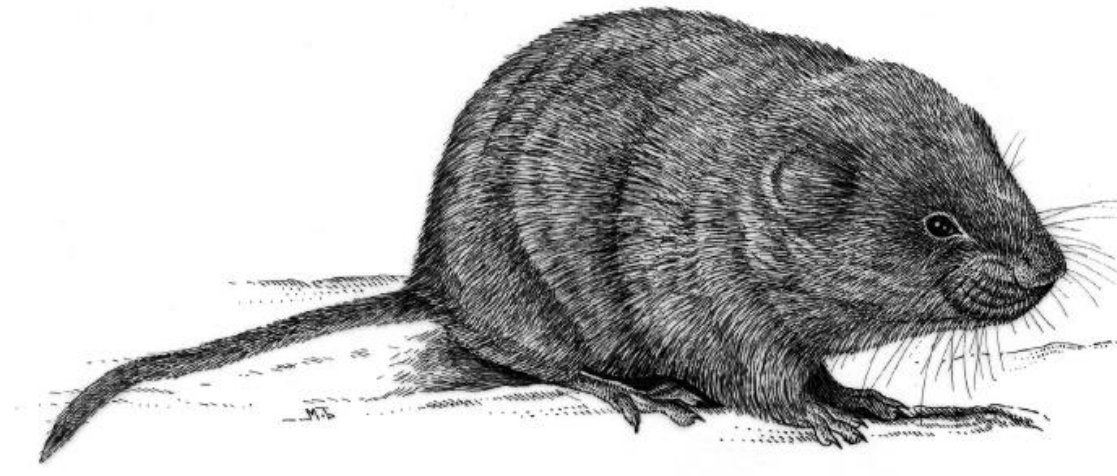
**Topillo de Cabrera**  
*Microtus cabrerae*



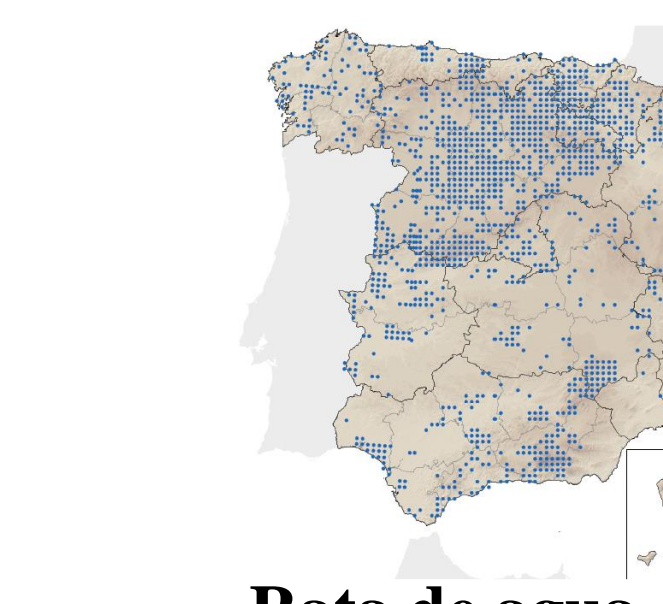
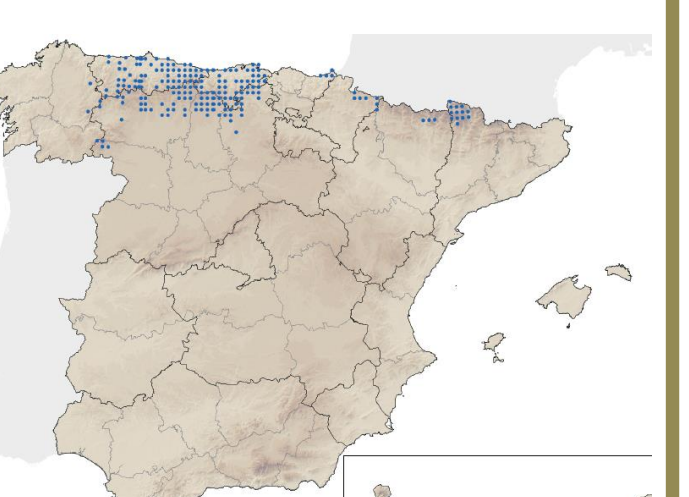
**Topillo nival**  
*Chionomys nivalis*



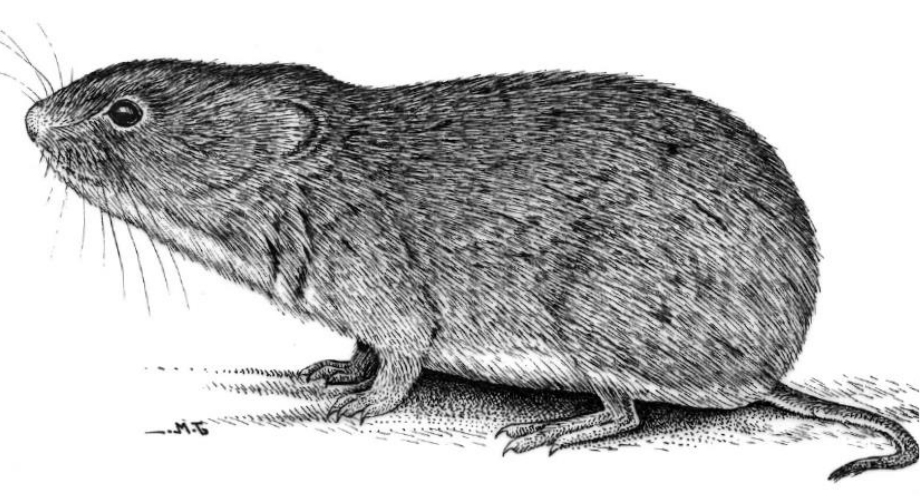
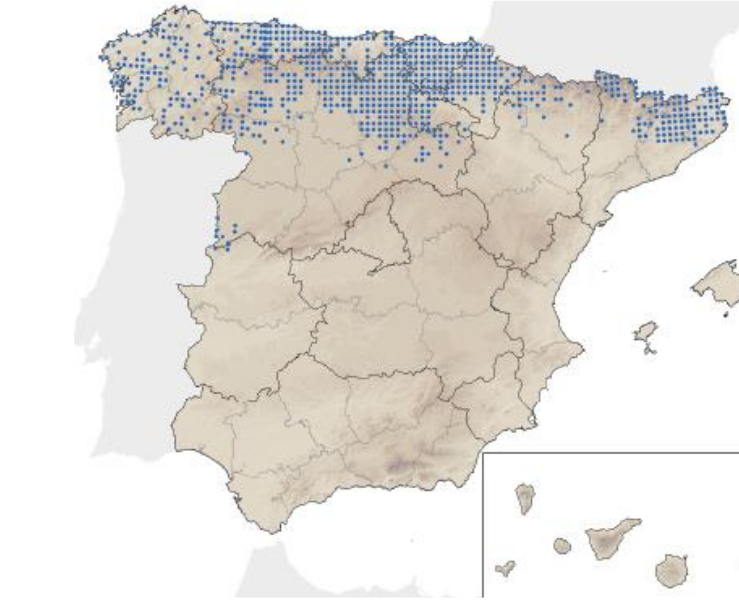
**Topillo rojo**  
*Myodes glareolus*



**Rata topera**  
*Arvicola terrestris*



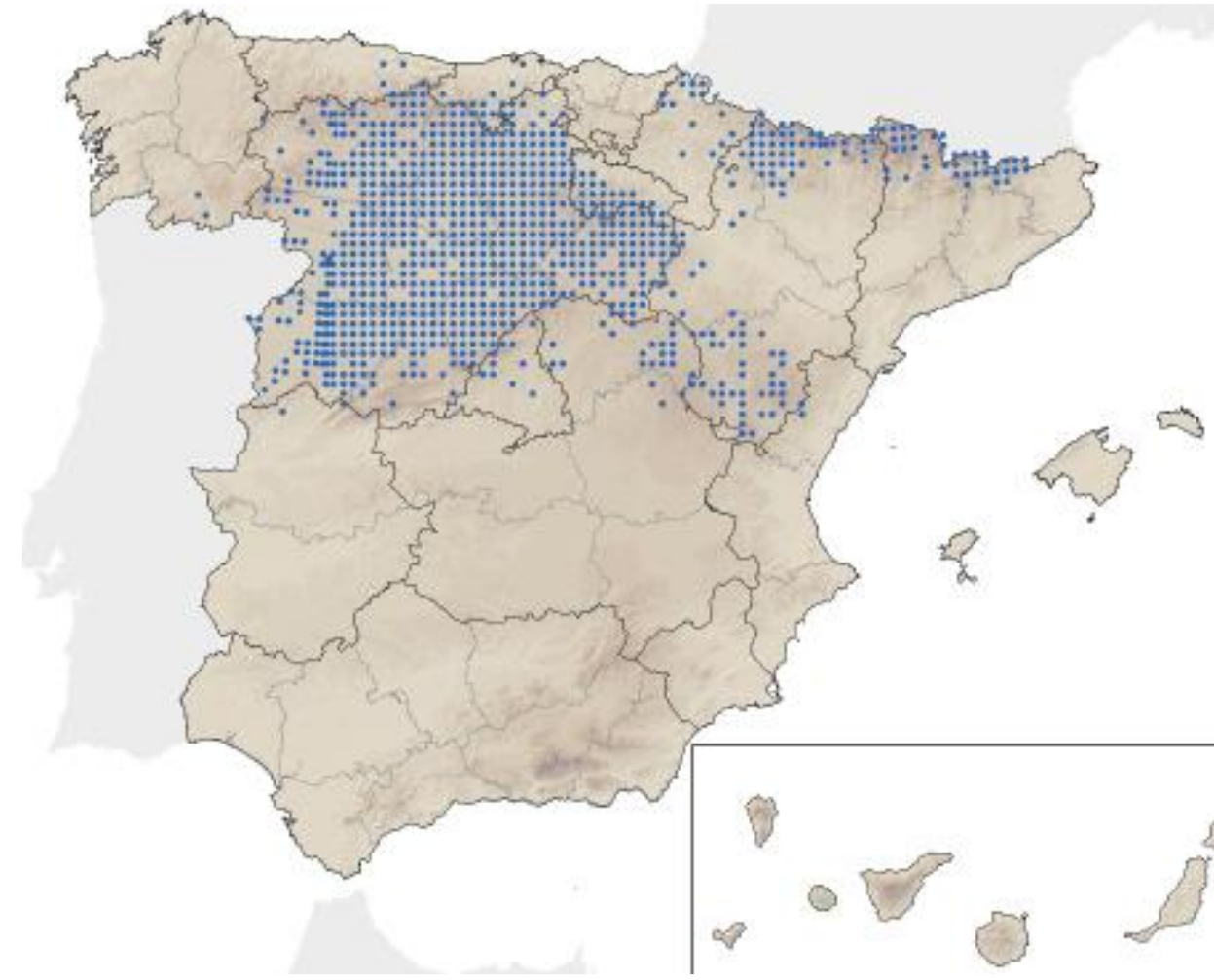
**Rata de agua**  
*Arvicola sapidus*



**Topillo agreste**  
*Microtus agrestis*



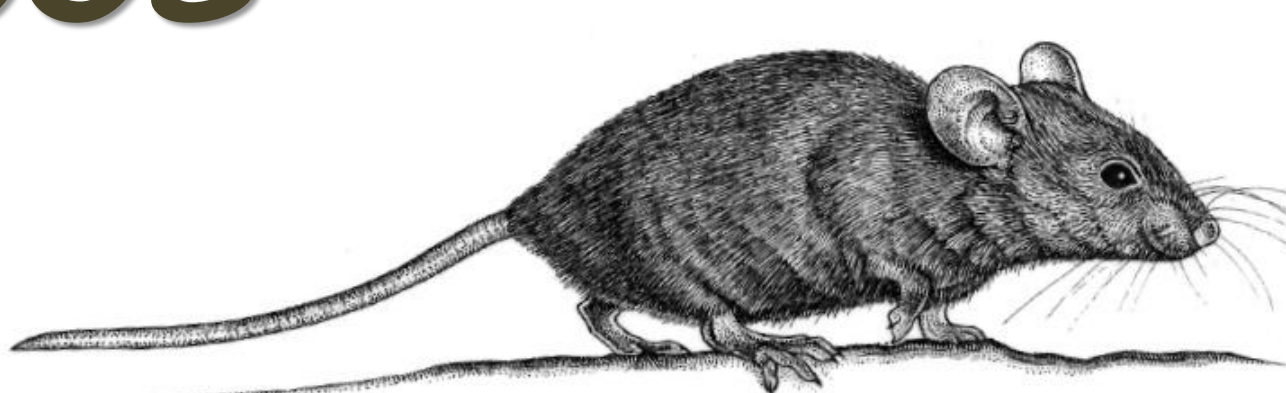
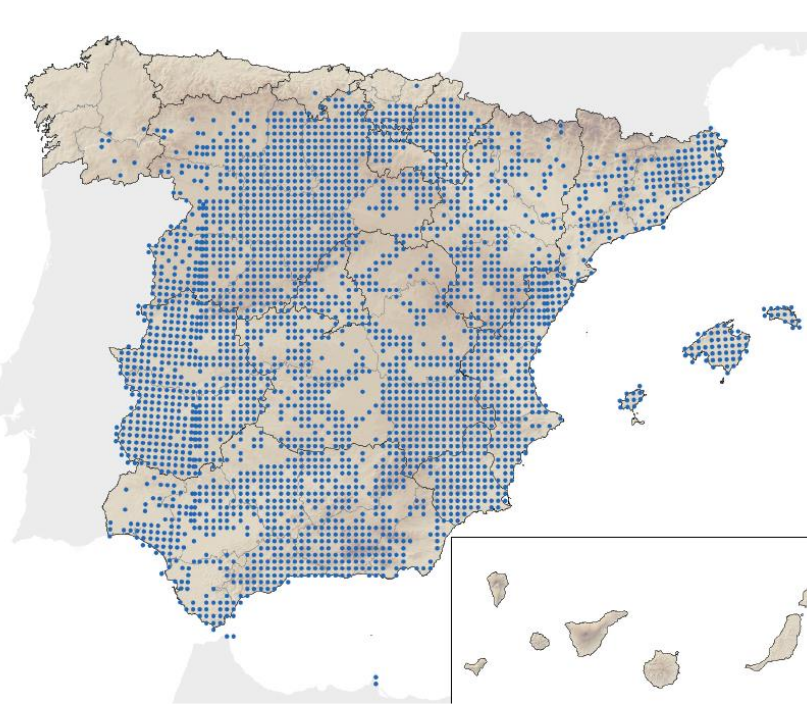
**Topillo campesino**  
*Microtus arvalis* (Pallas, 1778)



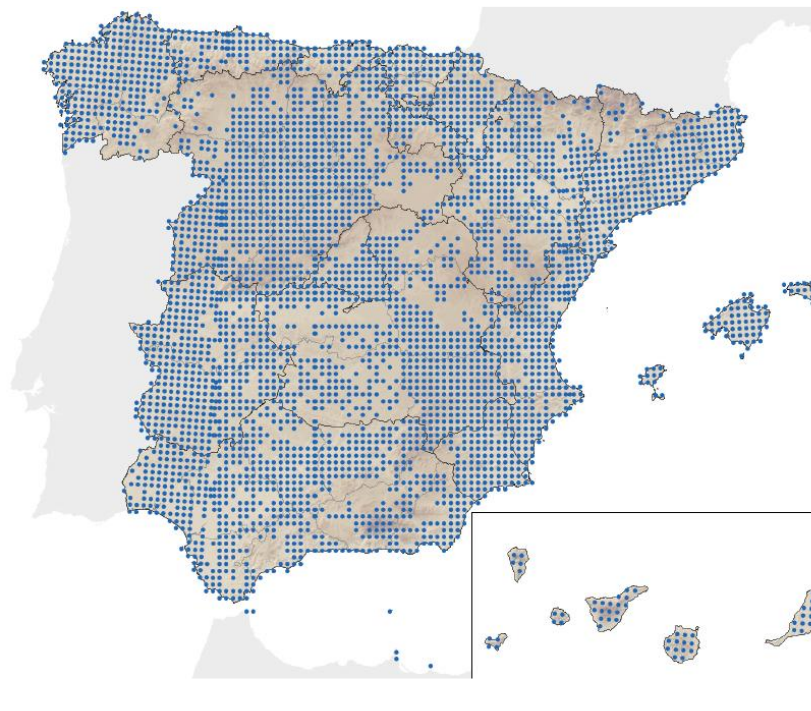
## MURIDOS



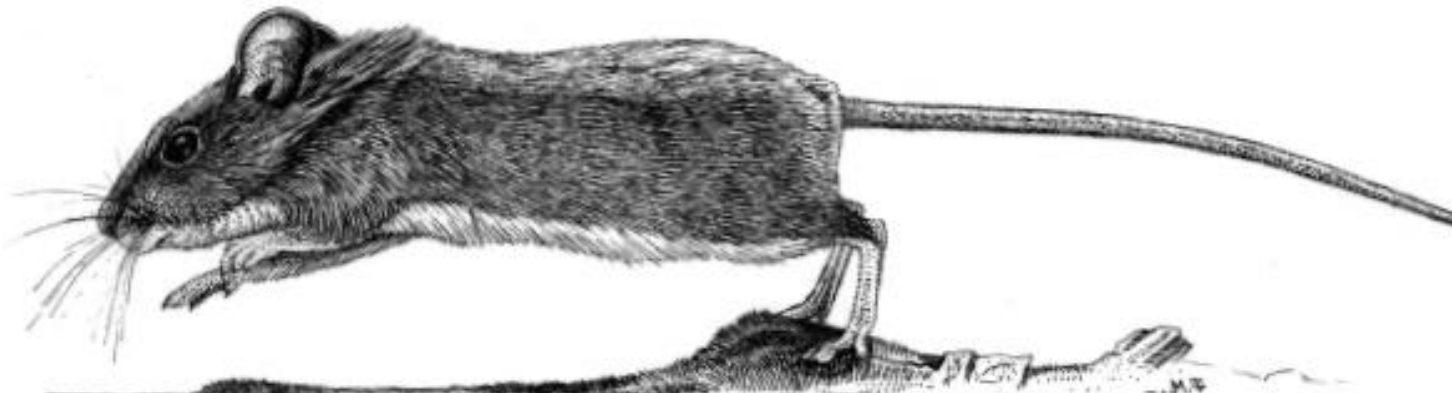
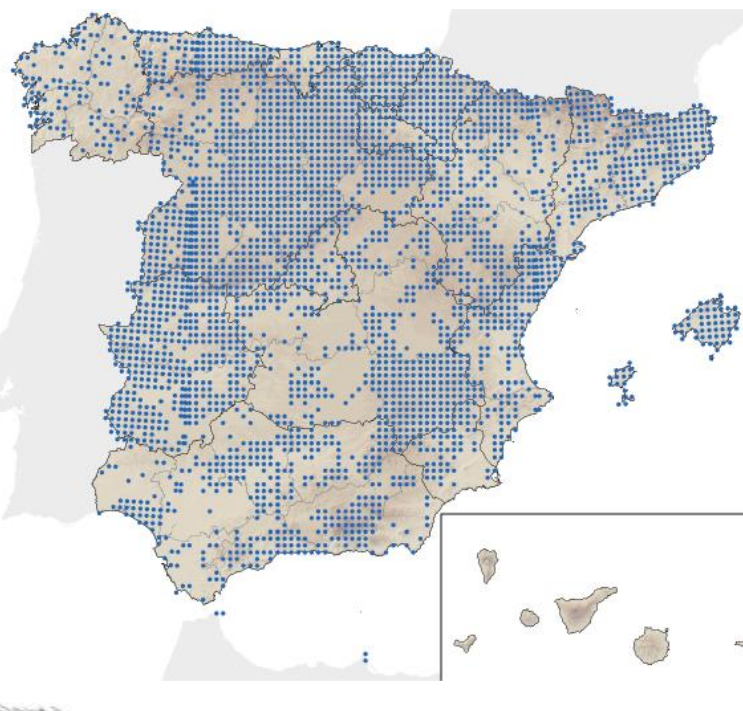
**Ratón moruno**  
*Mus spretus*



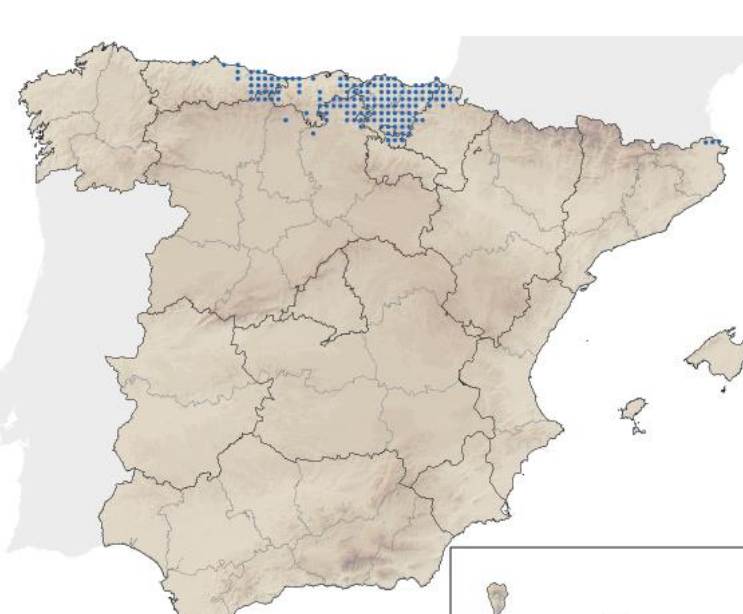
**Ratón casero**  
*Mus musculus*



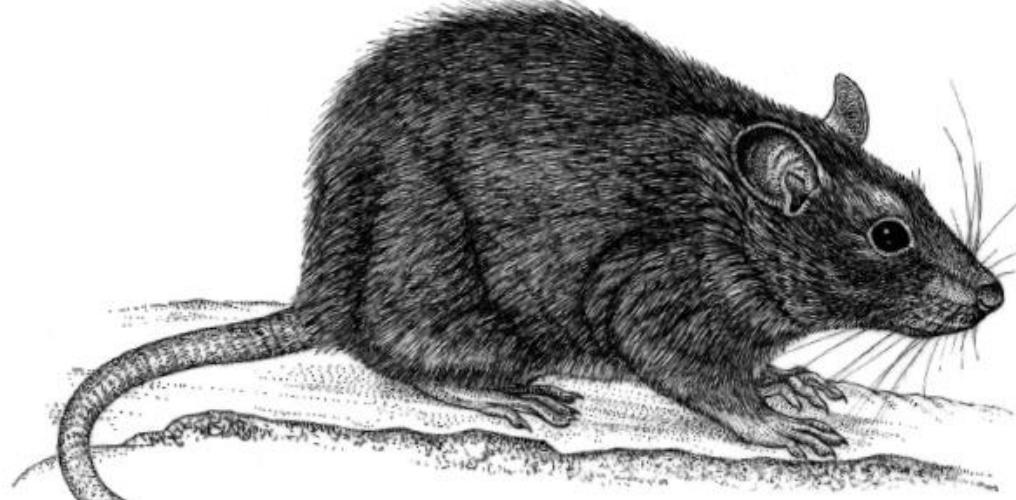
**Ratón leonado**  
*Apodemus flavicollis*



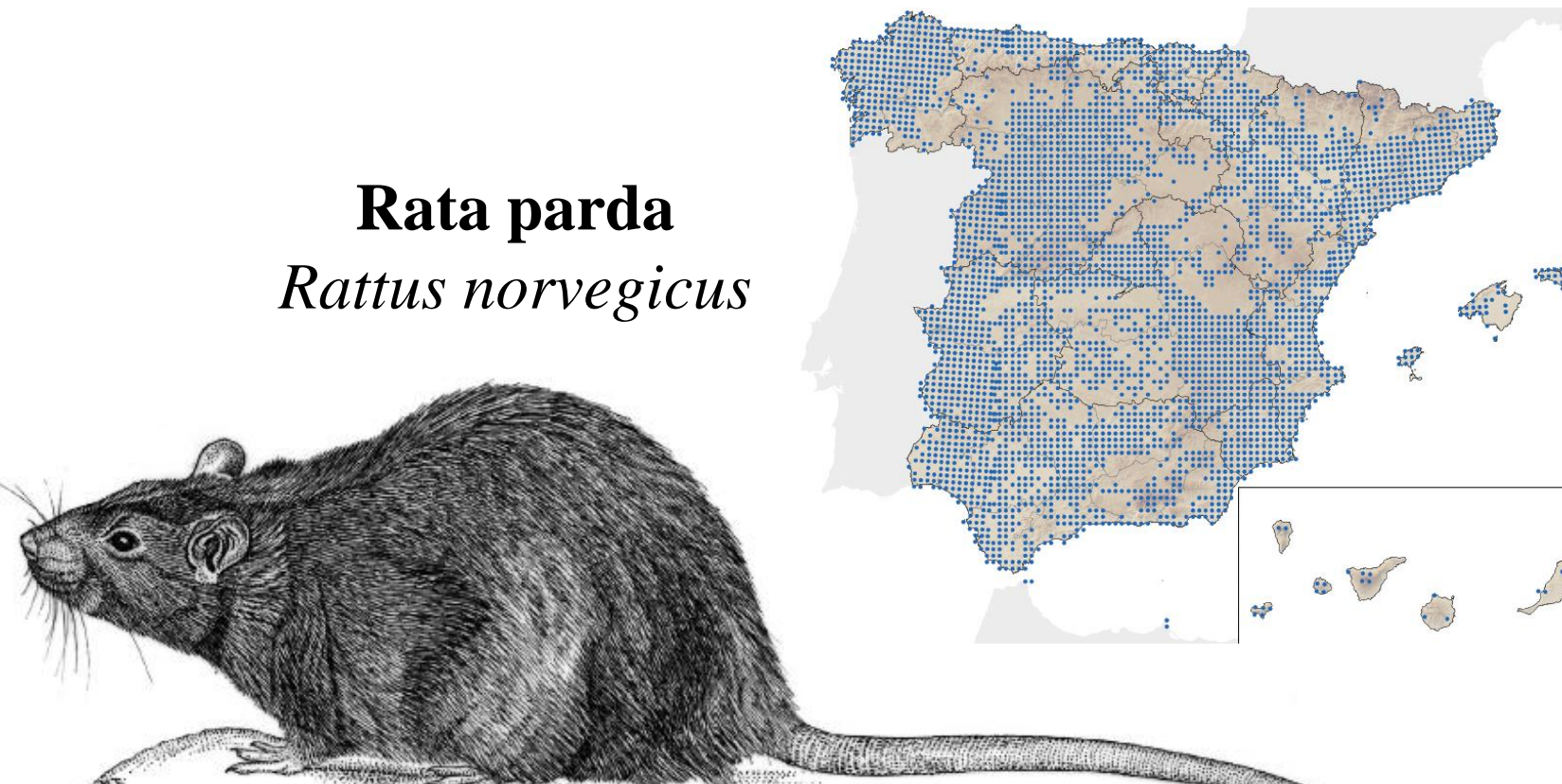
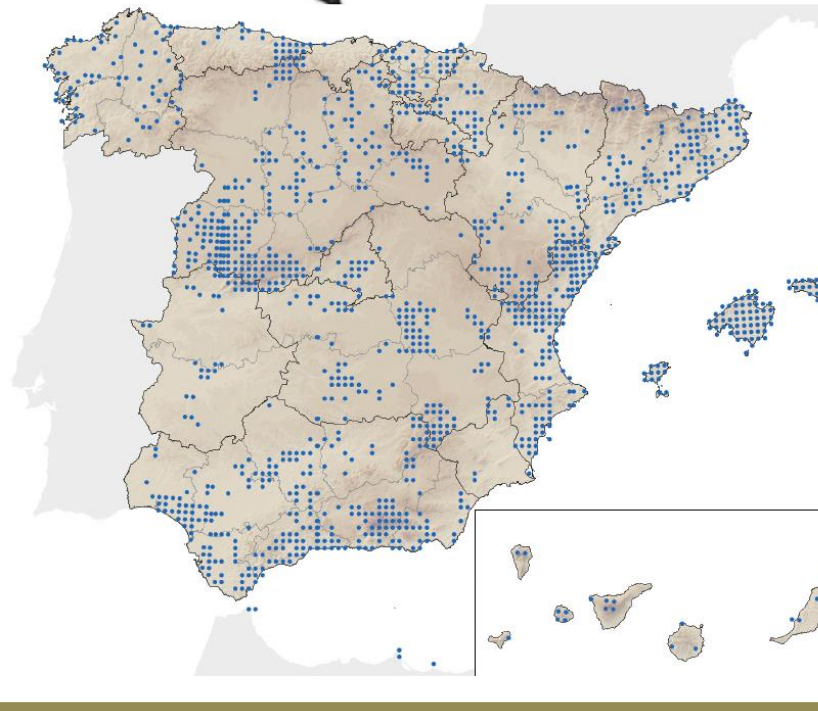
**Ratón de campo**  
*Apodemus sylvaticus*



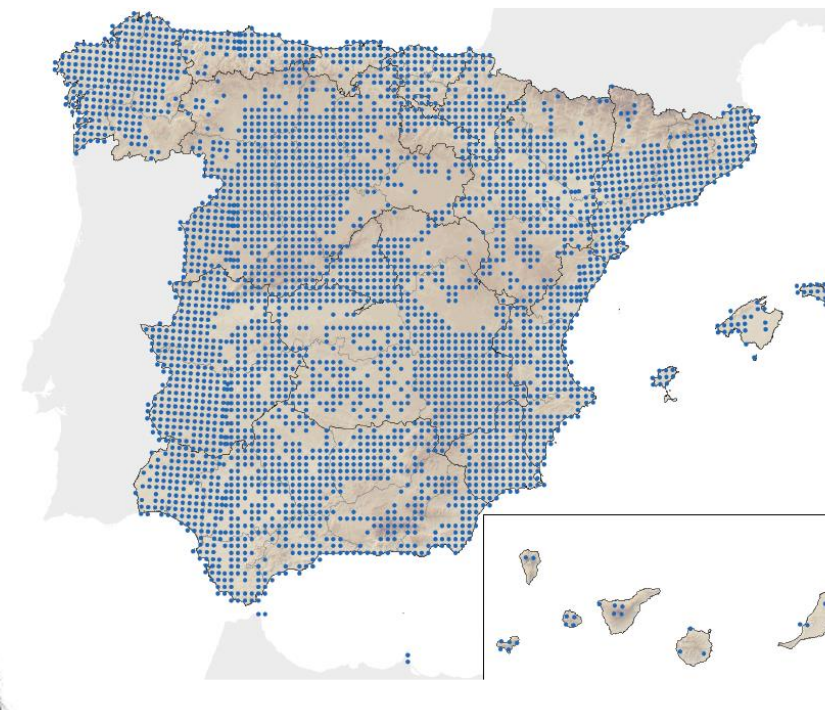
**Ratón espiguero**  
*Micromys minutus*



**Rata negra**  
*Rattus rattus*



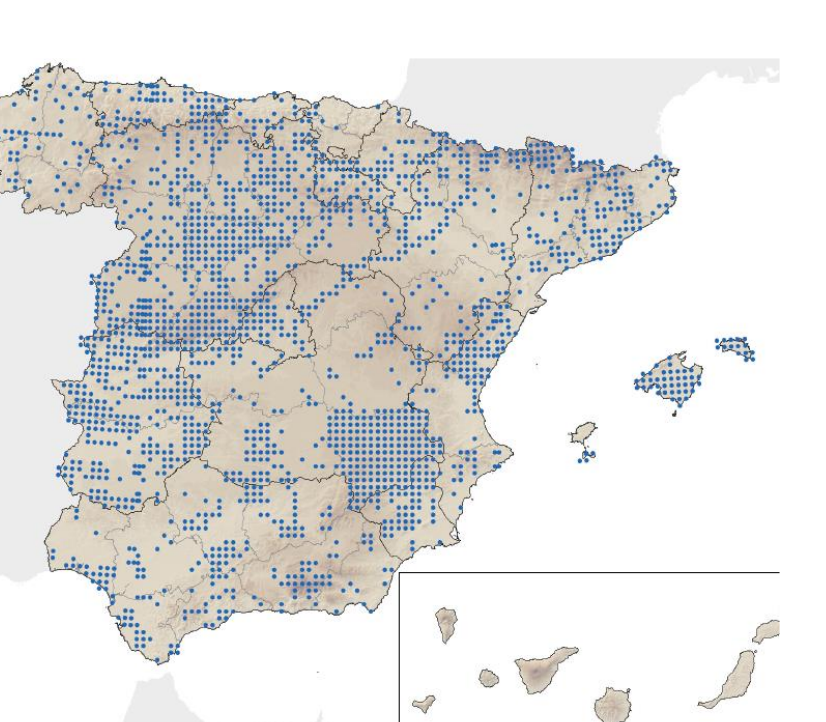
**Rata parda**  
*Rattus norvegicus*



## OTROS ROEDORES



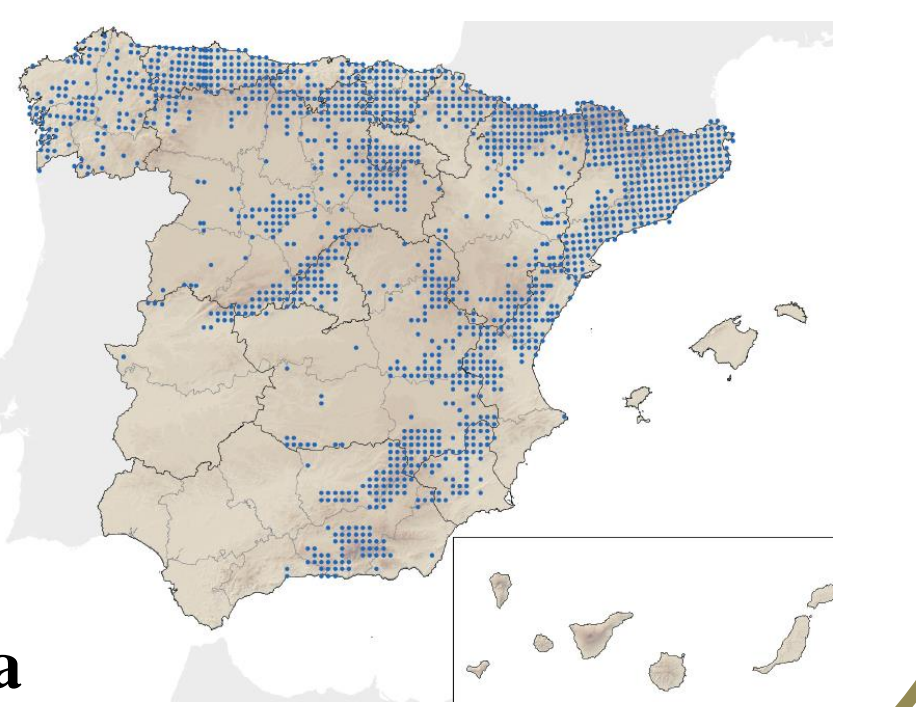
**Lirón careto**  
*Eliomys quercinus*



**Lirón gris**  
*Glis glis*



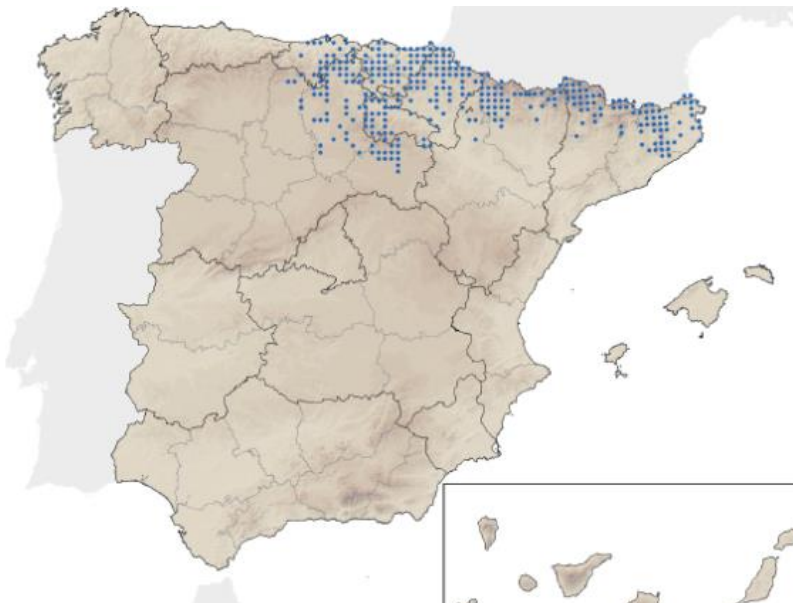
**Ardilla roja**  
*Sciurus vulgaris*



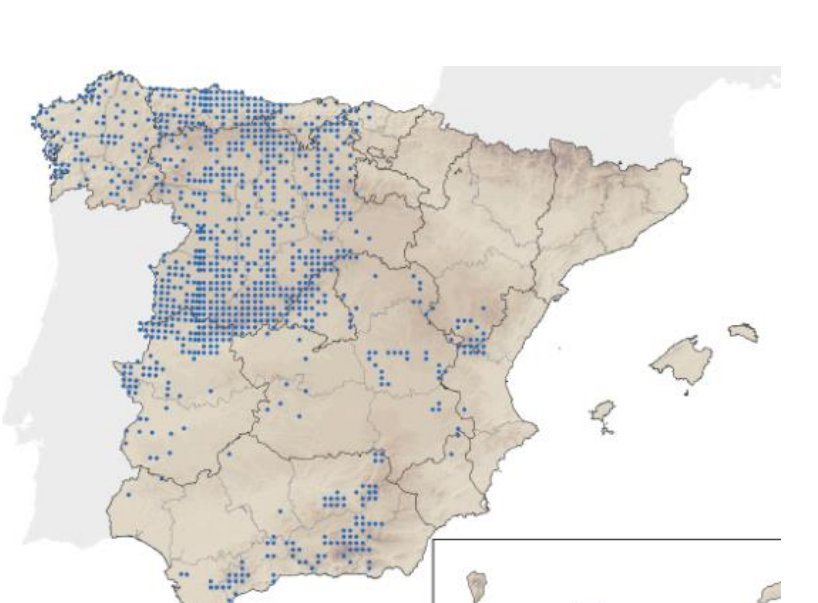
## TÁLPIDOS



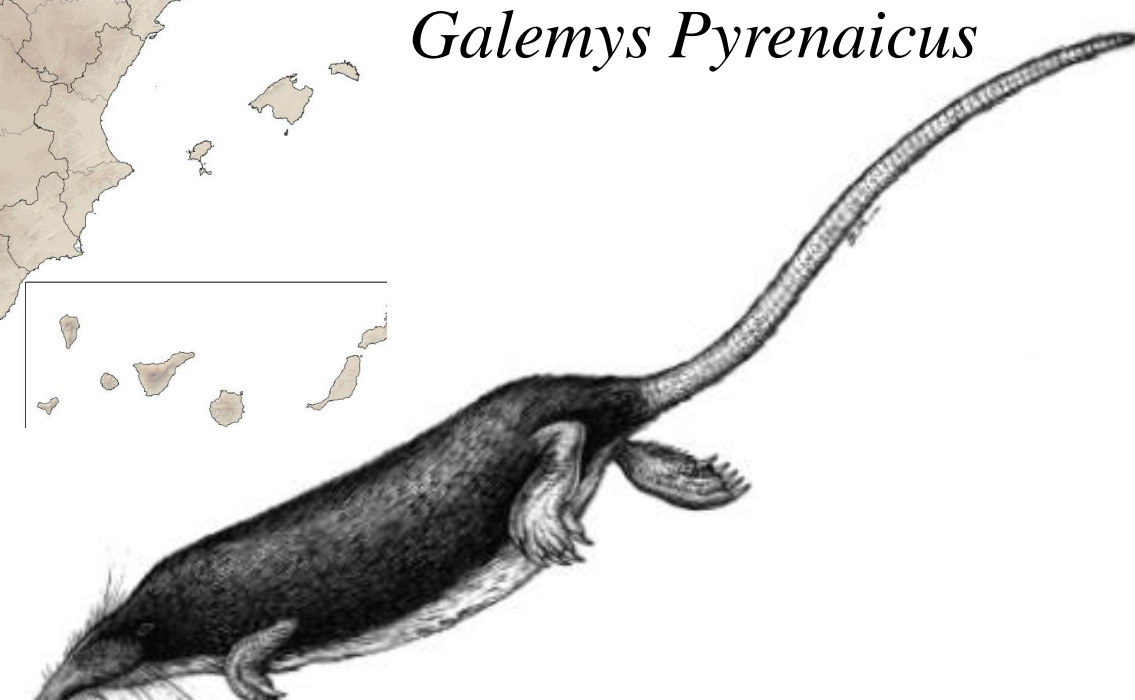
**Topo europeo**  
*Talpa europaea*



**Topo ibérico**  
*Talpa occidentalis*



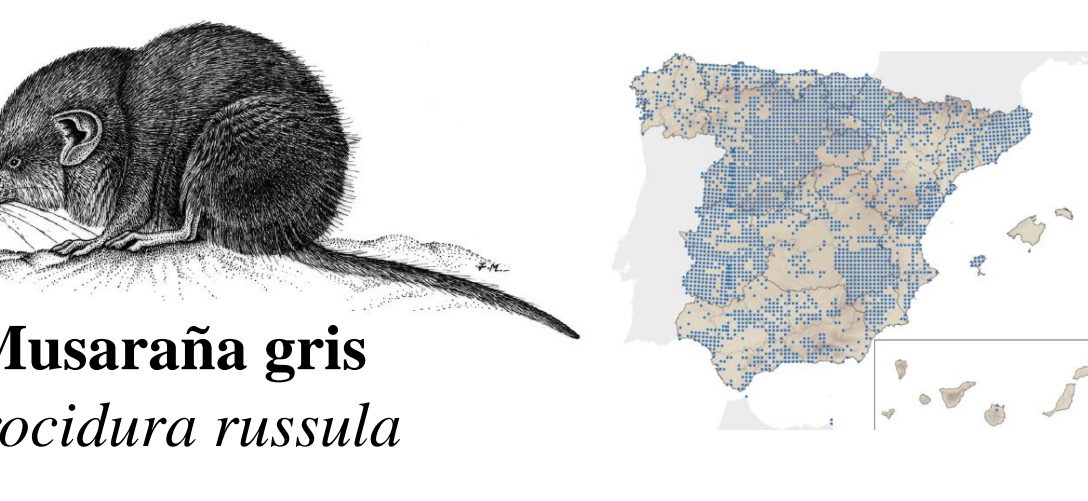
**Desmán ibérico**  
*Galemys pyrenaicus*



## MUSARAÑAS Y MUSGAÑOS



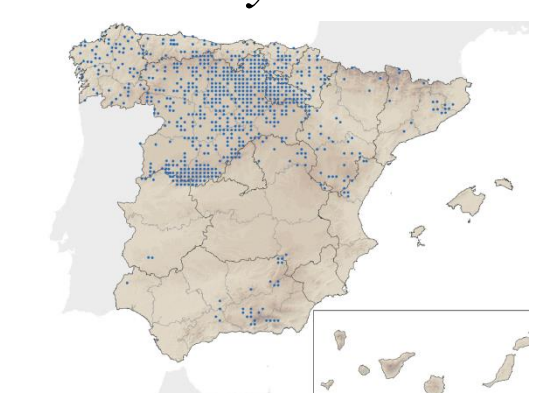
**Musaraña gris**  
*Crocidura russula*



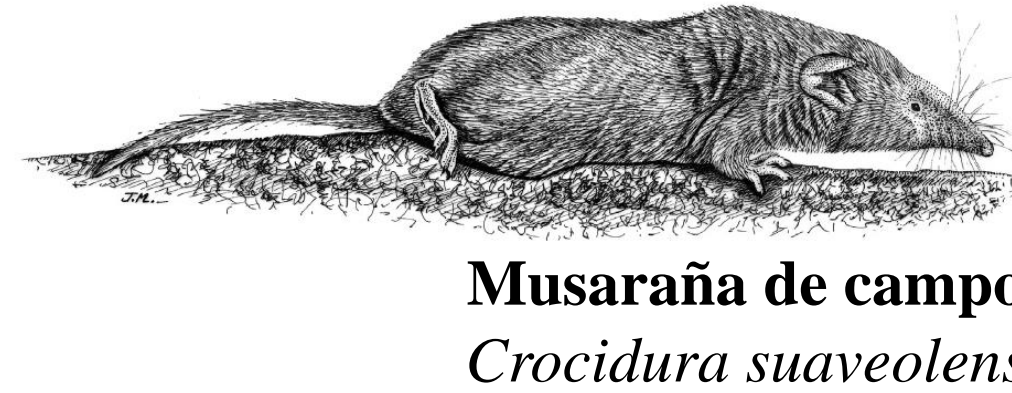
**Musgaño enano**  
*Suncus etruscus*



**Musgaño de Cabrera**  
*Neomys anomalus*



**Musgaño patiblanco**  
*Neomys fodiens*



**Musaraña de campo**  
*Crocidura suaveolens*



**Musaraña enana**  
*Sorex minutus*



**Musaraña tricolor**  
*Sorex coronatus*



**Musaraña ibérica**  
*Sorex granarius*

